

普通話水平測試 60 篇朗讀作品統計資料

(c) 2011 Lin Qi

如需引用，請註明出處

基本資料

文字內容：普通話水平測試的 60 篇朗讀作品

總字數：28679 字（包括 // 後的字詞）

統計內容：聲母出現頻率、聲調出現頻率、韻母出現頻率、兒化音節頻率及音節出現頻率統計

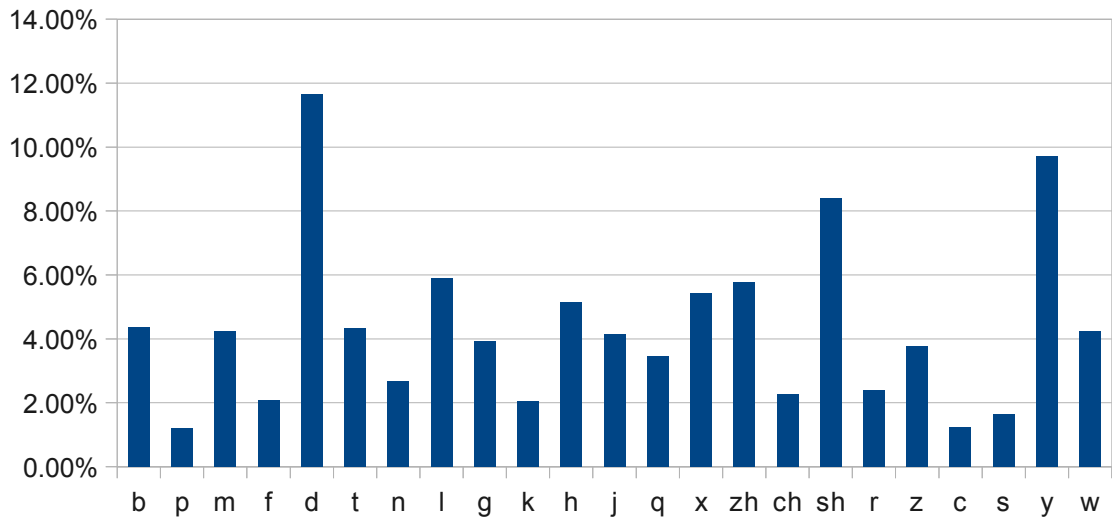
聲母出現頻率

聲母	頻率	百分比
b	1219	4.36%
p	336	1.20%
m	1181	4.23%
f	583	2.09%
d	3257	11.66%
t	1212	4.34%
n	751	2.69%
l	1644	5.88%
g	1101	3.94%
k	574	2.05%
h	1433	5.13%
j	1156	4.14%
q	968	3.46%
x	1518	5.43%
zh	1608	5.76%

ch	636	2.28%
sh	2351	8.41%
r	664	2.38%
z	1049	3.75%
c	346	1.24%
s	458	1.64%
y	2711	9.70%
w	1184	4.24%

說明：聲母 d 出現的頻率較多是因為“的”字出現較多。

聲母出現頻率



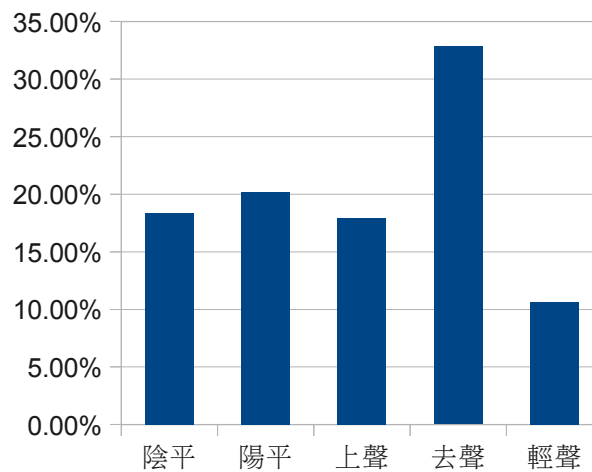
聲調出現頻率

聲調	頻率	百分比
陰平（第一聲）	5276	18.40%
陽平（第二聲）	5793	20.20%
上聲（第三聲）	5140	17.92%
去聲（第四聲）	9413	32.82%
輕聲	3057	10.66%

說明：

- ① “一”、“不”計算變調後的聲調。
- ② 上聲不計算在實際發音時的變調情況。
- ③ 輕聲包括常用的“的”、“了”、“着”等，所以統計數字較大。

聲調出現頻率



韻母出現頻率

韻母	頻率	百分比
a	1283	4.49%
o	558	1.95%
e	3648	12.76%
i	2485	8.69%
u	1730	6.05%
ü	542	1.90%
ai	1309	4.58%
ei	744	2.60%
ao	960	3.36%
ou	1068	3.74%
an	1225	4.29%
en	1090	3.81%
ang	1015	3.55%
eng	802	2.81%
ong	894	3.13%
ia	277	0.97%
ie	363	1.27%
iao	425	1.49%
iu	337	1.18%
ian	1081	3.78%
in	535	1.87%
iang	431	1.51%
ing	841	2.94%
iong	19	0.07%
ua	246	0.86%
uo	833	2.91%
uai	94	0.33%

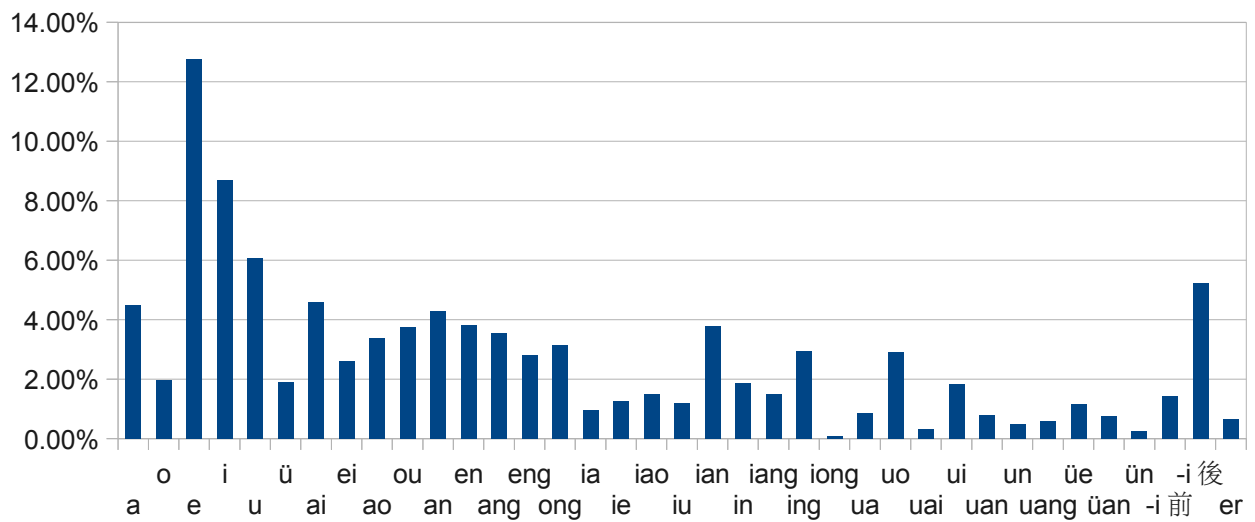
韻母	頻率	百分比
ui	528	1.85%
uan	224	0.78%
un	135	0.47%
uang	163	0.57%
üe	327	1.14%
üan	211	0.74%
ün	68	0.24%
-i 前	406	1.42%
-i 後	1495	5.23%
er	188	0.66%

說明：

y w 作為聲母計。

由於“的”的字數較多，所以其韻母 e 出現的頻率也較多。

韻母出現頻率



兒化音節統計

共計兒化音節：287 字（包括 er 韻）

兒化音節	頻率	百分比
er	181	63.07%
dianr	28	9.76%
hair	16	5.57%
nar	9	3.14%
zher	6	2.09%
quanr	4	1.39%
huir	3	1.05%
qiur	3	1.05%
tour	3	1.05%
weir	3	1.05%
daor	2	0.70%
huor	2	0.70%
jianr	2	0.70%
tiaor	2	0.70%
tongr	2	0.70%
wanr	2	0.70%
banr	1	0.35%
bianr	1	0.35%
danr	1	0.35%
genr	1	0.35%
guar	1	0.35%
jindr	1	0.35%
jir	1	0.35%
ker	1	0.35%
kour	1	0.35%

兒化音節	頻率	百分比
laor	1	0.35%
mor	1	0.35%
renr	1	0.35%
shuir	1	0.35%
sir	1	0.35%
tianr	1	0.35%
wenr	1	0.35%
yanr	1	0.35%
zaor	1	0.35%
zhenr	1	0.35%

音節頻率統計

(不包括兒化音節，兒化音節另作統計)

音節	頻率	百分比
de	1677	5.907%
shi	1032	3.635%
yi	939	3.307%
you	528	1.860%
zhe	465	1.638%
wo	455	1.603%
le	429	1.511%
ta	411	1.448%
bu	397	1.398%
zai	373	1.314%
zhi	369	1.300%
ren	316	1.113%
li	313	1.102%
ji	308	1.085%
xiang	274	0.965%
dao	270	0.951%
zhong	267	0.940%
zi	265	0.933%
ge	261	0.919%
shang	248	0.873%
wei	242	0.852%
qi	236	0.831%
sheng	233	0.821%
hua	225	0.792%
da	215	0.757%
tian	206	0.726%

音節	頻率	百分比
jian	201	0.708%
mei	200	0.704%
lai	199	0.701%
guo	197	0.694%
men	195	0.687%
xiao	194	0.683%
jiu	192	0.676%
he	191	0.673%
yu	183	0.645%
di	180	0.634%
shu	171	0.602%
ye	170	0.599%
na	169	0.595%
hui	168	0.592%
hai	163	0.574%
jing	163	0.574%
ke	156	0.549%
jia	154	0.542%
xi	152	0.535%
yang	151	0.532%
ba	146	0.514%
duo	143	0.504%
jin	143	0.504%
wu	142	0.500%
qu	141	0.497%
yuan	140	0.493%
chu	138	0.486%
jie	137	0.483%

音節	頻率	百分比
shen	136	0.479%
qing	135	0.475%
fu	134	0.472%
xin	134	0.472%
xing	133	0.468%
ni	132	0.465%
xian	132	0.465%
shuo	131	0.461%
ming	130	0.458%
hou	129	0.454%
fang	126	0.444%
xue	125	0.440%
yao	120	0.423%
xia	118	0.416%
dong	117	0.412%
kan	117	0.412%
xie	117	0.412%
qian	116	0.409%
wen	114	0.402%
bian	110	0.387%
mu	107	0.377%
bi	106	0.373%
yan	106	0.373%
chang	105	0.370%
zuo	105	0.370%
cheng	103	0.363%
ran	103	0.363%
shan	101	0.356%

音節	頻率	百分比
mian	98	0.345%
dou	97	0.342%
dan	96	0.338%
hao	96	0.338%
bei	95	0.335%
huo	95	0.335%
shui	95	0.335%
yin	95	0.335%
liang	94	0.331%
zheng	91	0.321%
wang	87	0.306%
ma	86	0.303%
yong	86	0.303%
zhu	85	0.299%
me	84	0.296%
ban	83	0.292%
neng	83	0.292%
tai	83	0.292%
wan	83	0.292%
nian	82	0.289%
yue	81	0.285%
shou	80	0.282%
cong	78	0.275%
fa	78	0.275%
hu	78	0.275%
xu	77	0.271%
si	76	0.268%
bai	75	0.264%

音節	頻率	百分比
dai	74	0.261%
ju	74	0.261%
se	74	0.261%
guang	73	0.257%
fen	72	0.254%
feng	72	0.254%
gei	72	0.254%
gao	71	0.250%
hen	71	0.250%
jiao	71	0.250%
nan	71	0.250%
dui	69	0.243%
lao	67	0.236%
que	67	0.236%
cai	66	0.232%
ru	66	0.232%
ci	65	0.229%
gan	65	0.229%
ting	65	0.229%
kuai	64	0.225%
tong	64	0.225%
bao	63	0.222%
qin	63	0.222%
tou	63	0.222%
gong	62	0.218%
kai	62	0.218%
ti	62	0.218%
zhang	62	0.218%

音節	頻率	百分比
su	61	0.215%
liu	60	0.211%
chi	59	0.208%
zui	59	0.208%
fei	57	0.201%
gu	57	0.201%
tu	57	0.201%
dang	54	0.190%
qiu	54	0.190%
zhao	54	0.190%
zou	54	0.190%
lv	53	0.187%
man	53	0.187%
san	53	0.187%
ying	53	0.187%
zu	52	0.183%
lu	51	0.180%
sui	51	0.180%
jue	50	0.176%
suo	50	0.176%
mo	49	0.173%
zhen	49	0.173%
dian	48	0.169%
pian	47	0.166%
zhan	47	0.166%
huan	46	0.162%
jiang	46	0.162%
mi	46	0.162%

音節	頻率	百分比
ling	45	0.158%
shao	45	0.158%
deng	44	0.155%
guan	44	0.155%
ai	43	0.151%
rong	43	0.151%
tan	43	0.151%
du	42	0.148%
luo	42	0.148%
mai	42	0.148%
quan	42	0.148%
an	41	0.144%
fan	41	0.144%
lian	41	0.144%
ping	41	0.144%
chuan	40	0.141%
qie	40	0.141%
ku	39	0.137%
geng	38	0.134%
lin	38	0.134%
ding	37	0.130%
pu	37	0.130%
wai	36	0.127%
kong	35	0.123%
ri	35	0.123%
gai	34	0.120%
gui	34	0.120%
huang	34	0.120%

音節	頻率	百分比
bing	33	0.116%
peng	33	0.116%
zao	33	0.116%
han	32	0.113%
lei	32	0.113%
qiao	32	0.113%
lan	31	0.109%
bie	30	0.106%
rang	30	0.106%
tiao	30	0.106%
gen	29	0.102%
hong	29	0.102%
ya	29	0.102%
yun	29	0.102%
zhuang	29	0.102%
chen	28	0.099%
chong	28	0.099%
po	28	0.099%
tang	28	0.099%
chun	27	0.095%
song	27	0.095%
zong	27	0.095%
tao	26	0.092%
ben	25	0.088%
a	24	0.085%
can	24	0.085%
che	24	0.085%
kou	24	0.085%

音節	頻率	百分比
liao	24	0.085%
ne	24	0.085%
pai	24	0.085%
ceng	23	0.081%
niao	23	0.081%
she	23	0.081%
duan	22	0.077%
bo	21	0.074%
cun	21	0.074%
gang	21	0.074%
zhuan	21	0.074%
cao	20	0.070%
lie	20	0.070%
meng	20	0.070%
min	20	0.070%
nong	20	0.070%
pa	20	0.070%
pin	20	0.070%
tuo	20	0.070%
zhou	20	0.070%
la	19	0.067%
lang	19	0.067%
lou	19	0.067%
pao	19	0.067%
re	19	0.067%
ze	19	0.067%
huai	18	0.063%
xun	18	0.063%

音節	頻率	百分比
nao	17	0.060%
nin	17	0.060%
sha	17	0.060%
xuan	17	0.060%
biao	16	0.056%
cha	16	0.056%
chan	16	0.056%
chui	16	0.056%
gou	16	0.056%
mang	16	0.056%
mao	16	0.056%
niu	16	0.056%
chao	15	0.053%
die	15	0.053%
kao	15	0.053%
piao	15	0.053%
te	15	0.053%
xiu	15	0.053%
zen	15	0.053%
dun	14	0.049%
hei	14	0.049%
nei	14	0.049%
nv	14	0.049%
pan	14	0.049%
pang	14	0.049%
qiang	14	0.049%
sen	14	0.049%
cang	13	0.046%

音節	頻率	百分比
gua	13	0.046%
hang	13	0.046%
lun	13	0.046%
nai	13	0.046%
nuo	13	0.046%
suan	13	0.046%
wa	13	0.046%
za	13	0.046%
zun	13	0.046%
juan	12	0.042%
nuan	12	0.042%
rou	12	0.042%
sai	12	0.042%
xiong	12	0.042%
zhun	12	0.042%
e	11	0.039%
leng	11	0.039%
long	11	0.039%
pi	11	0.039%
qun	11	0.039%
ruo	11	0.039%
sa	11	0.039%
shuang	11	0.039%
zeng	11	0.039%
zhuo	11	0.039%
chuang	10	0.035%
cu	10	0.035%
diao	10	0.035%

音節	頻率	百分比
jun	10	0.035%
miao	10	0.035%
teng	10	0.035%
guai	9	0.032%
keng	9	0.032%
rui	9	0.032%
shei	9	0.032%
tui	9	0.032%
bang	8	0.028%
en	8	0.028%
kang	8	0.028%
kuo	8	0.028%
ou	8	0.028%
shun	8	0.028%
zhui	8	0.028%
chou	7	0.025%
cui	7	0.025%
cuo	7	0.025%
ken	7	0.025%
luan	7	0.025%
reng	7	0.025%
ce	6	0.021%
hun	6	0.021%
kuang	6	0.021%
kun	6	0.021%
mou	6	0.021%
nen	6	0.021%
ning	6	0.021%

音節	頻率	百分比
nu	6	0.021%
pei	6	0.021%
qiong	6	0.021%
ruan	6	0.021%
sang	6	0.021%
tun	6	0.021%
weng	6	0.021%
ao	5	0.018%
bin	5	0.018%
ca	5	0.018%
ka	5	0.018%
kuan	5	0.018%
pen	5	0.018%
sao	5	0.018%
tuan	5	0.018%
zan	5	0.018%
zha	5	0.018%
ang	4	0.014%
beng	4	0.014%
chai	4	0.014%
heng	4	0.014%
lüe	4	0.014%
o	4	0.014%
qia	4	0.014%
sun	4	0.014%
kua	3	0.011%
kui	3	0.011%
niang	3	0.011%

音節	頻率	百分比
rao	3	0.011%
run	3	0.011%
shai	3	0.011%
shua	3	0.011%
shuai	3	0.011%
zhai	3	0.011%
dei	2	0.007%
fou	2	0.007%
gun	2	0.007%
mie	2	0.007%
pou	2	0.007%
zang	2	0.007%
zhua	2	0.007%
zuan	2	0.007%
cou	1	0.004%
fo	1	0.004%
ga	1	0.004%
jiong	1	0.004%
lia	1	0.004%
nie	1	0.004%
shuan	1	0.004%
tie	1	0.004%
zhei	1	0.004%